

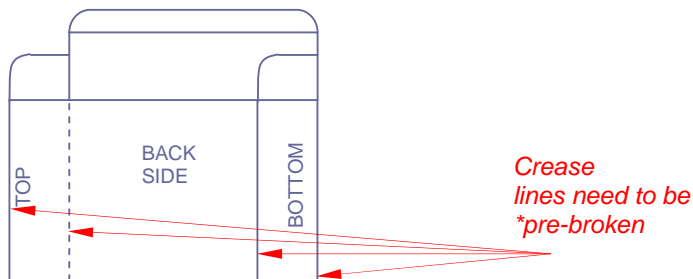
## SLIPCASE (SINGLE CASE) – SPECIFICATIONS

### CONTENTS

- Page 1** General specification details  
**Page 2** Slipcase for use with a 15.00 spine thickness DVD case  
**Page 3** Expanded details of tuck in flap in slipcase

### GENERAL

- Material:** 500 micron thickness WBFBB Card  
**Material Thickness:** Calliper tolerance + / - 3%  
**Material Weights:** Grammage tolerance + / - 3%  
**Direction of Grain:** Parallel with *LENGTH* for Slipcases  
**Dimensions:** All to be within +1.00 mm across the batch  
**Wrapping:** DVD cases can be over wrapped before OR after insertion into the slipcase as an integrated process.  
**Incoming Delivery:** Product to be received folded flat (not erected)  
**Fold / Crease Lines:** Measurement between folds to be parallel to + / - 0.50 mm  
 The crease lines as shown on drawing below must be **\*pre-broken** during manufacturing



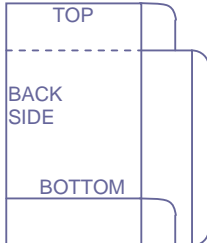
*These specifications are for use with  
 Technicolor approved DVD cases only.  
 Custom pack charges applies for all slipcases*

**Note: Drawing Not To Scale**

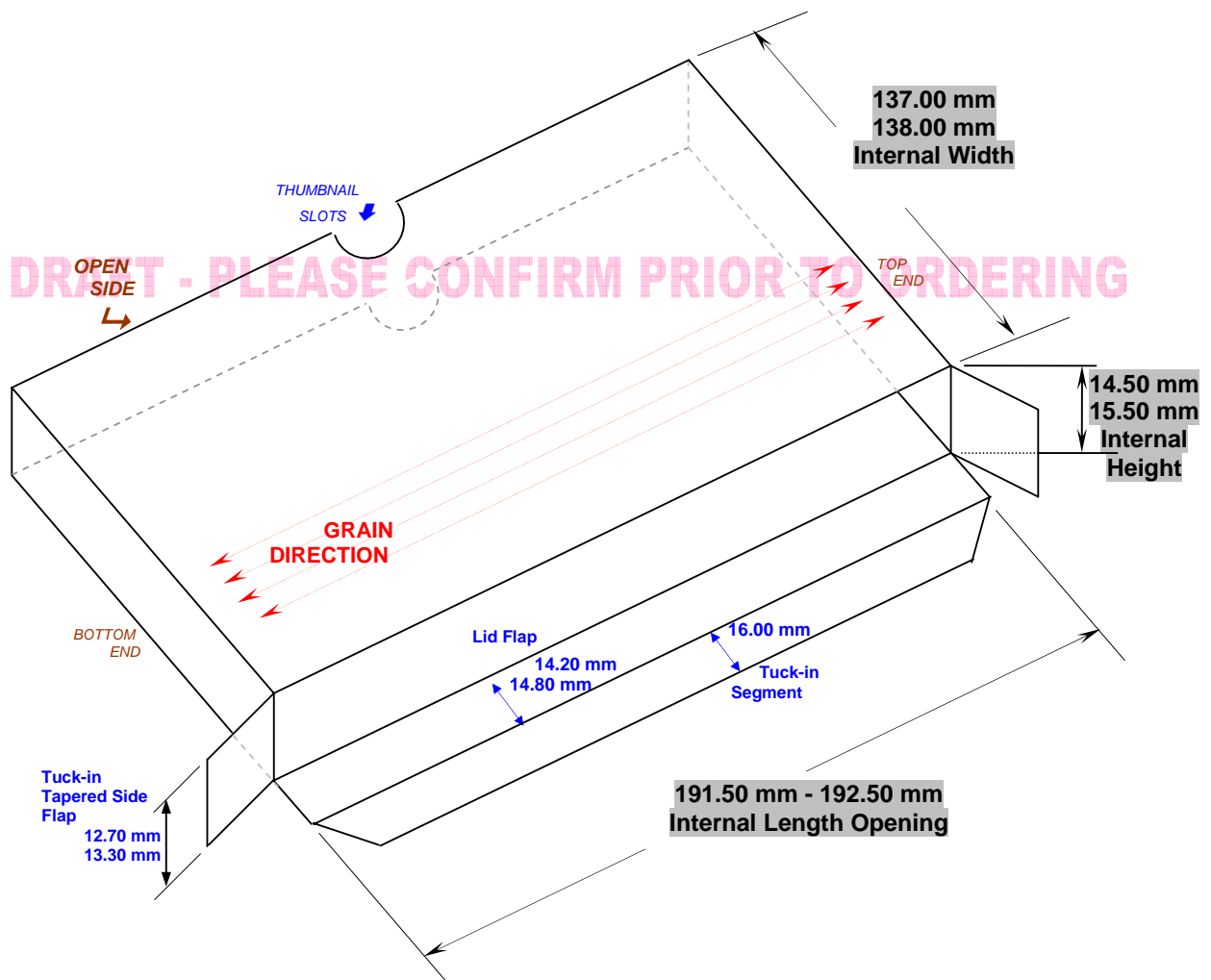


### SLIPCASE

**Style:** For use with one standard 15.00mm spine thickness DVD case



All dimensions are  
*INTERNAL* for the formed unit  
\* **THUMBNAIL** slot(s) can be added as an option

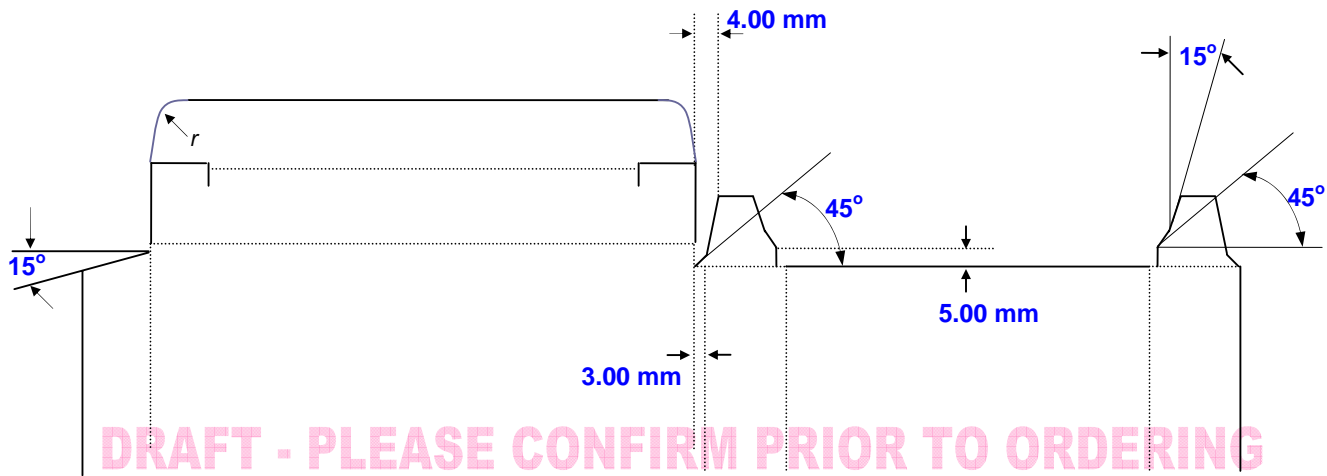


Note: Drawing Not To Scale

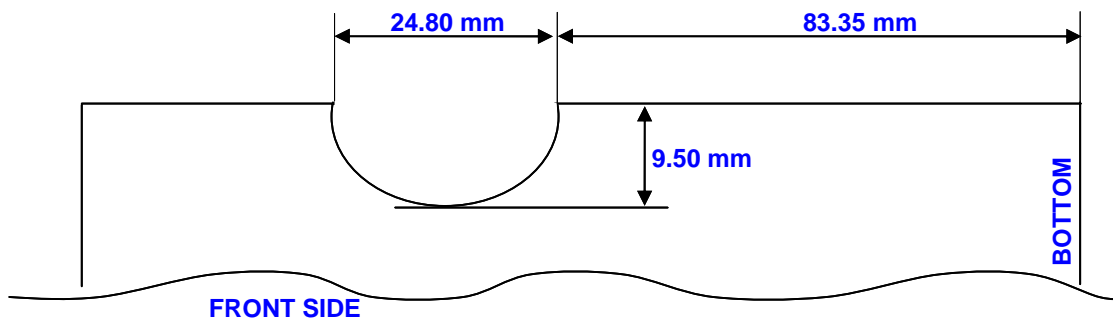


### EXPANDED VIEWS

#### Tuck in Flap:



#### Thumbnail Slot:



*All dimensions are  
INTERNAL for the formed unit*

Note: Drawing Not To Scale

